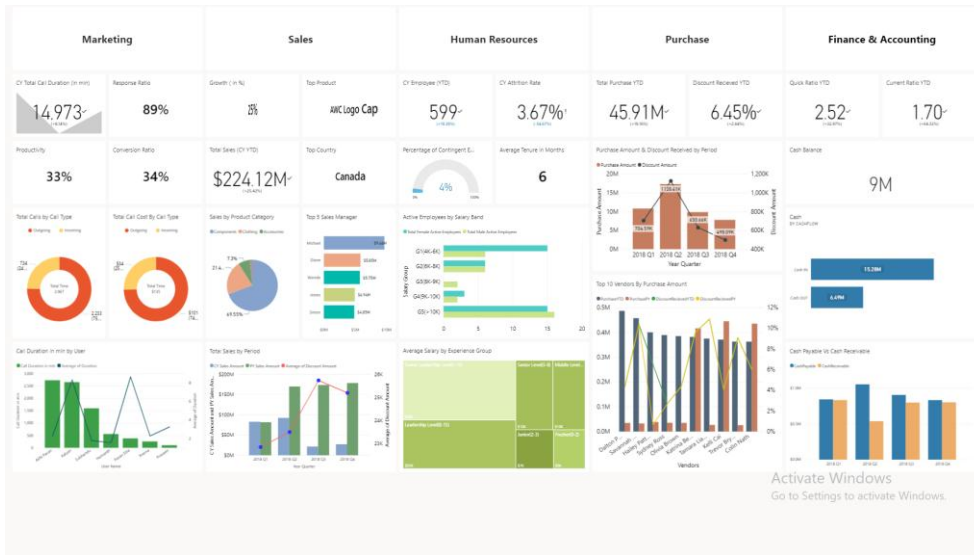


CASE STUDY – BUSINESS DASHBOARD



TECHNOLOGIES

1. Sources
 1. SAP (FICO, ESS, SD, CRM)
 2. MySQL
 3. Excel Spreadsheets
 4. FTP Server
2. ETL
 1. SSIS and PowerShell
 2. PowerBI Gateway
3. Analytical Layer
 1. Tabular Model
4. Power BI and SSRS for reporting



Power BI

CLIENT DETAILS

A global tire manufacturing company having implemented multiple module in SAP, FICO, SD, CRM to name a few, was looking at a consolidated view of their business, Sigitek worked with the customer in extracting data from SAP and building power BI dashboards. Following were capabilities that the customer was looking at :

- a. Consolidated Birds eye view of business
- b. Inhouse adhoc analysis/Self-service layer for users to use traditional tools like Excel.
- c. Leverage existing IT landscape to minimize cost and reduce Change Management.

SERVICES

Combination of technologies used to extract information for creating analytical platform.

- a. Consulting
- b. Scalable Architecture definition and roadmap
- c. Information extracted from sources like SAP, MySQL & Excel Spreadsheets, FTP and other Sources.
- d. SSIS to extract file information into SQL Database where intermediary storage is required.
- e. Merge data from various sources in SQL server using SQL scripts.
- f. Building Tabular Models for providing in-house analytical capabilities.
- g. Power BI for dashboards & scorecards and SSRS for tabular reporting.
- h. Active directory for authorization and authentication